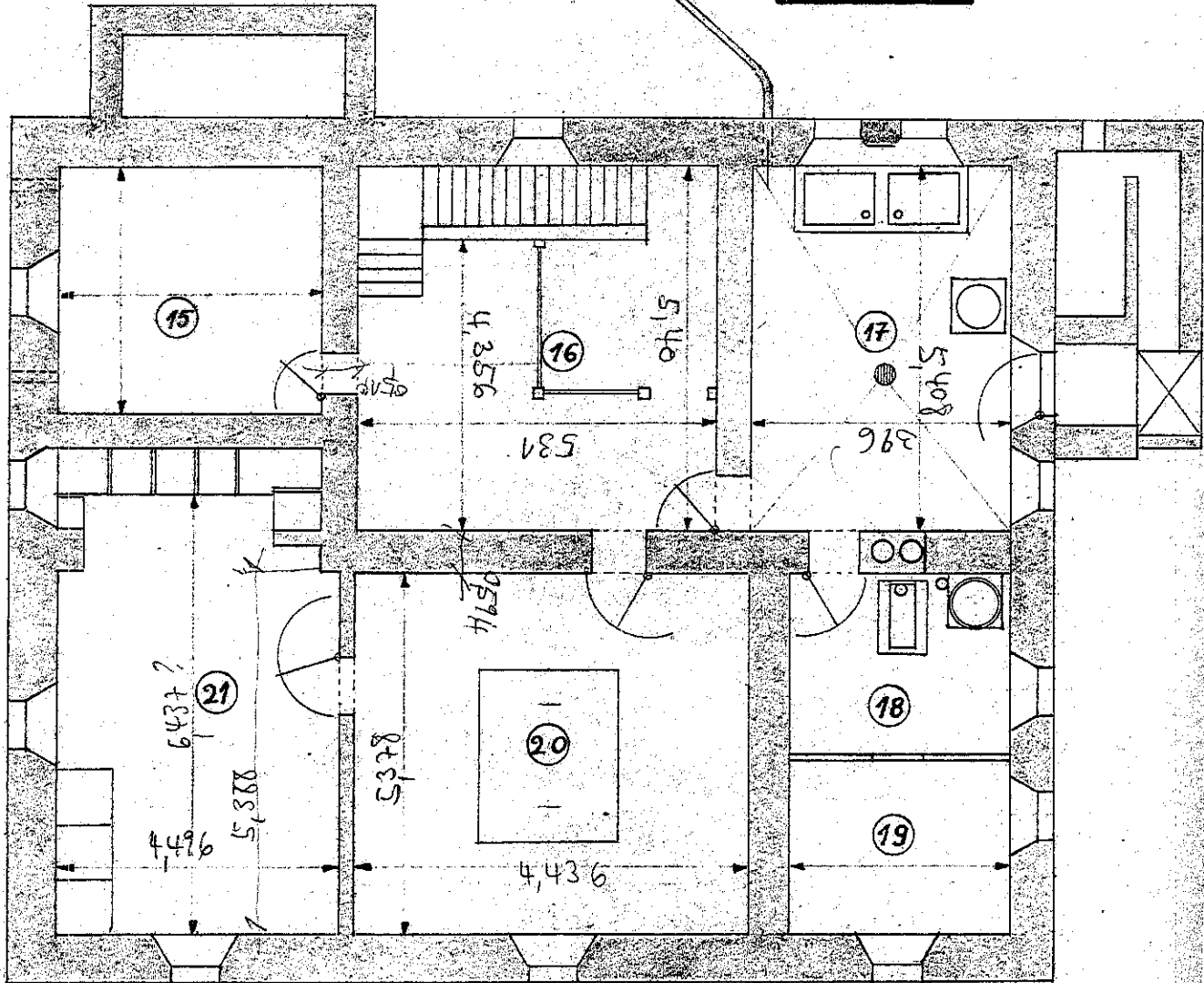
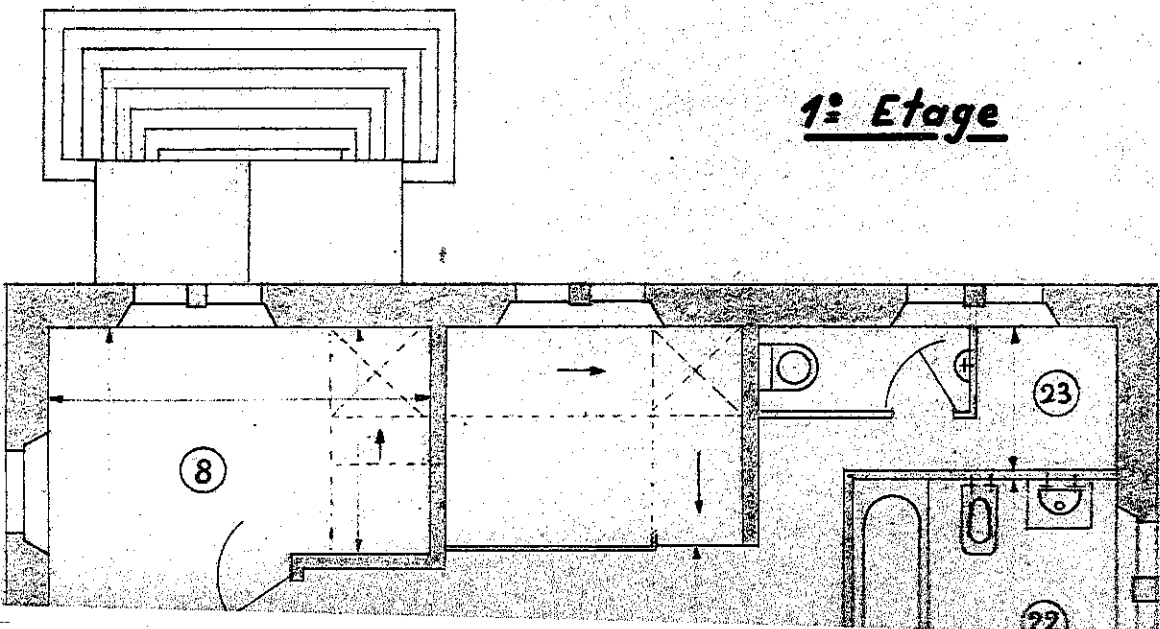


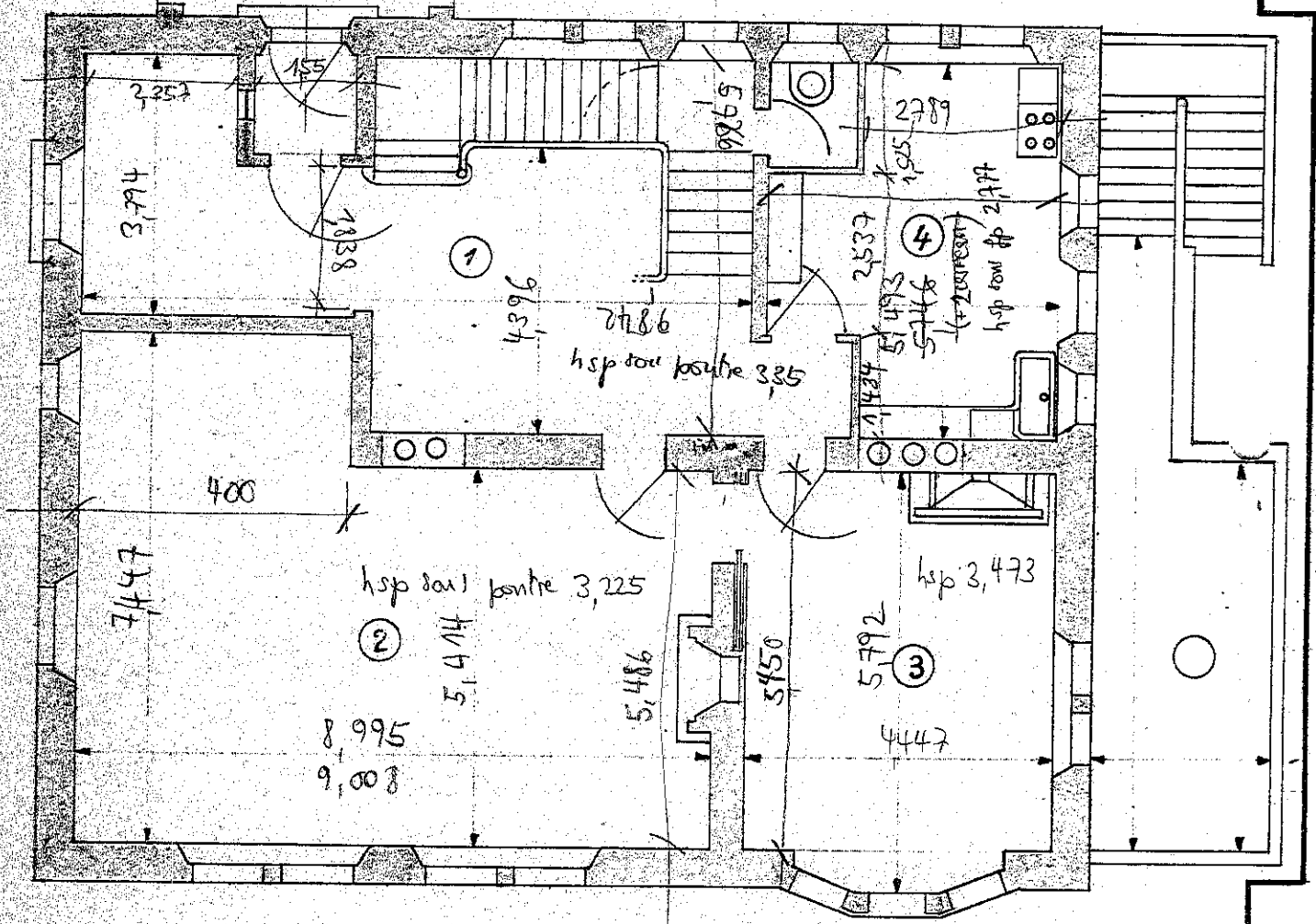
Sous-sol



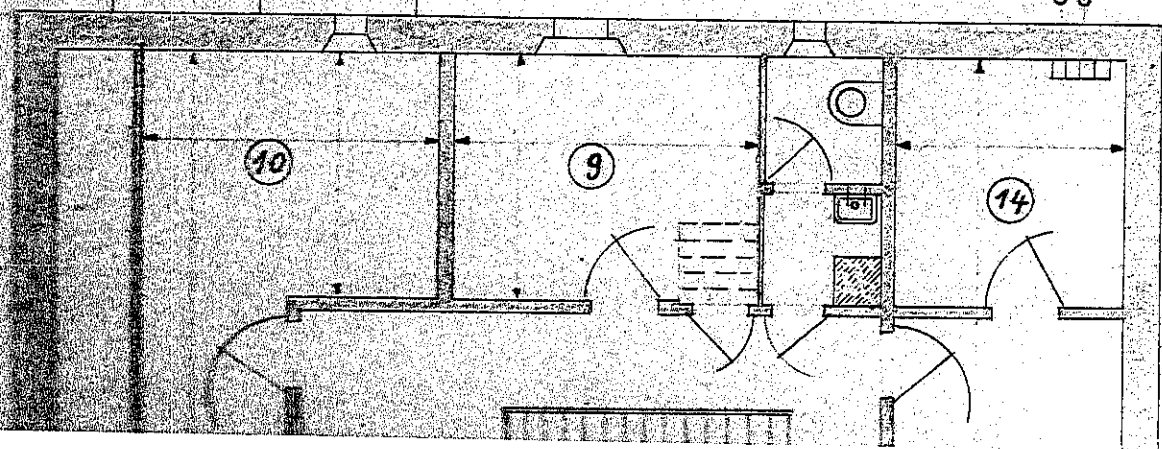
1<sup>er</sup> Etage

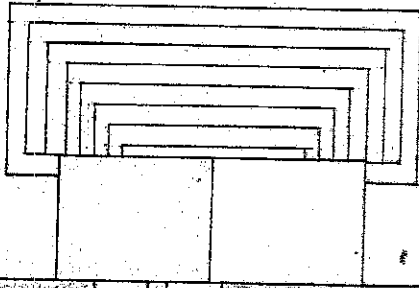
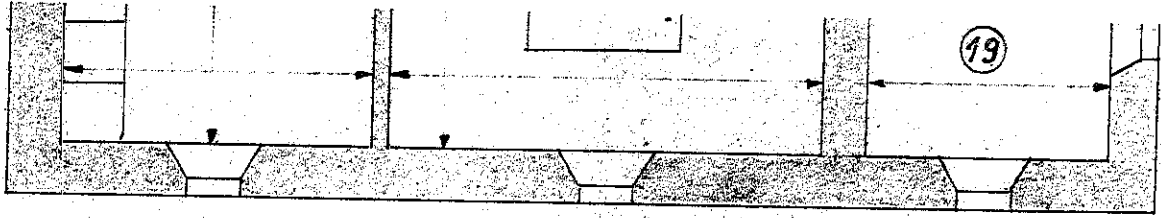


Entresol

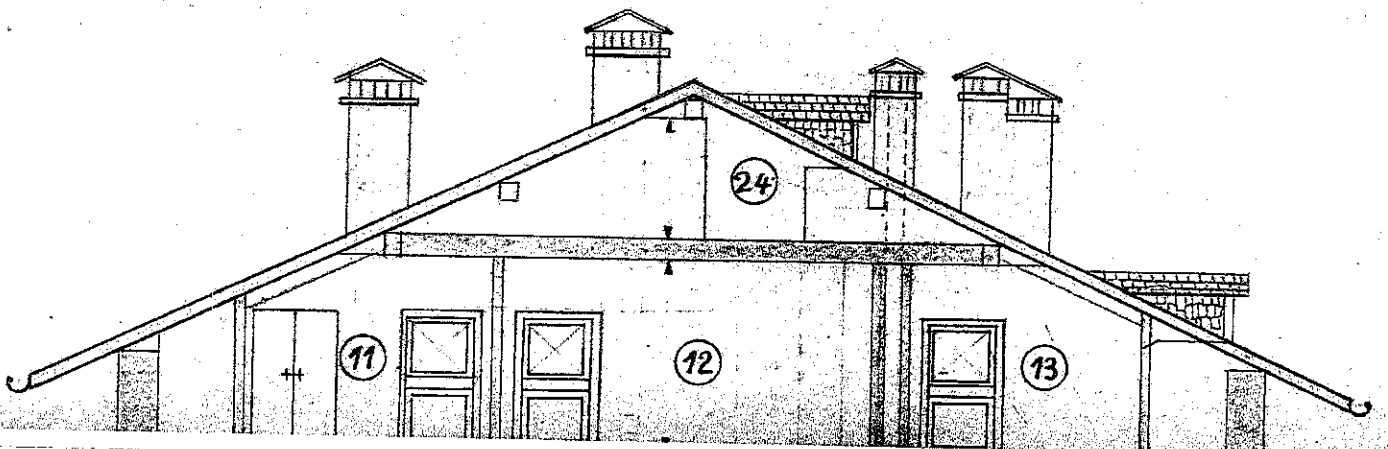
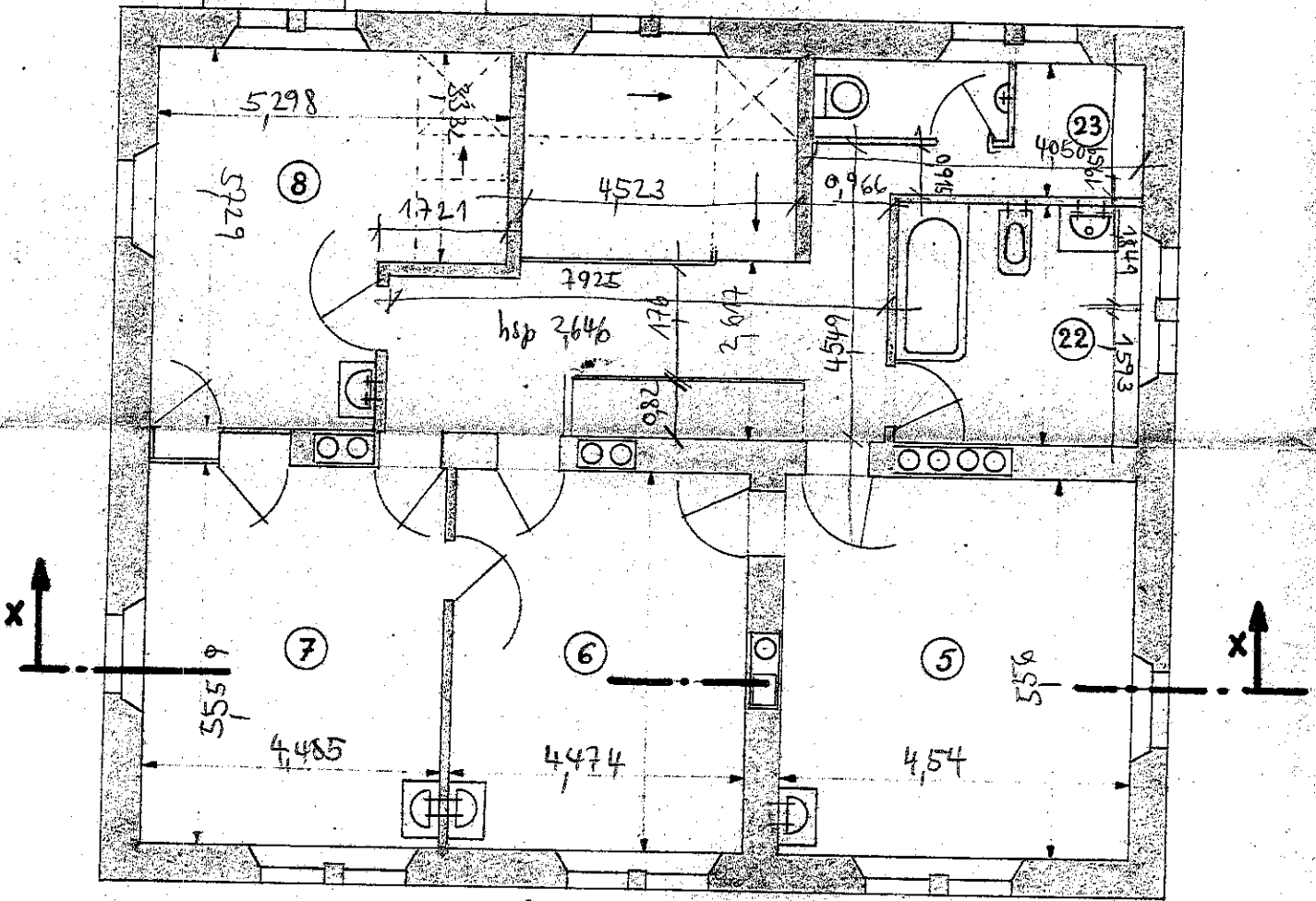


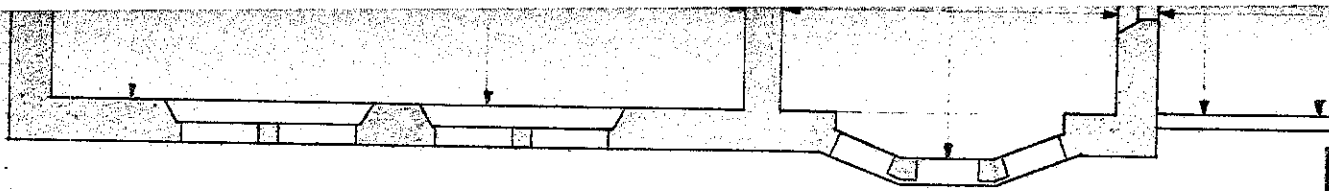
2: Etage





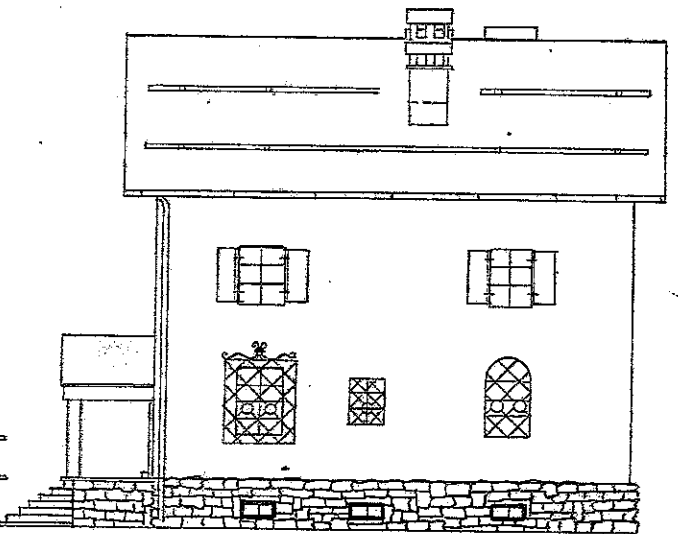
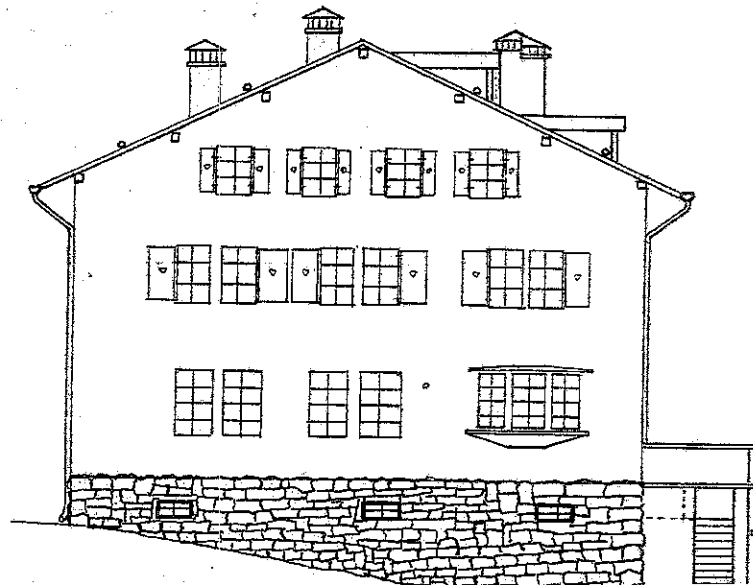
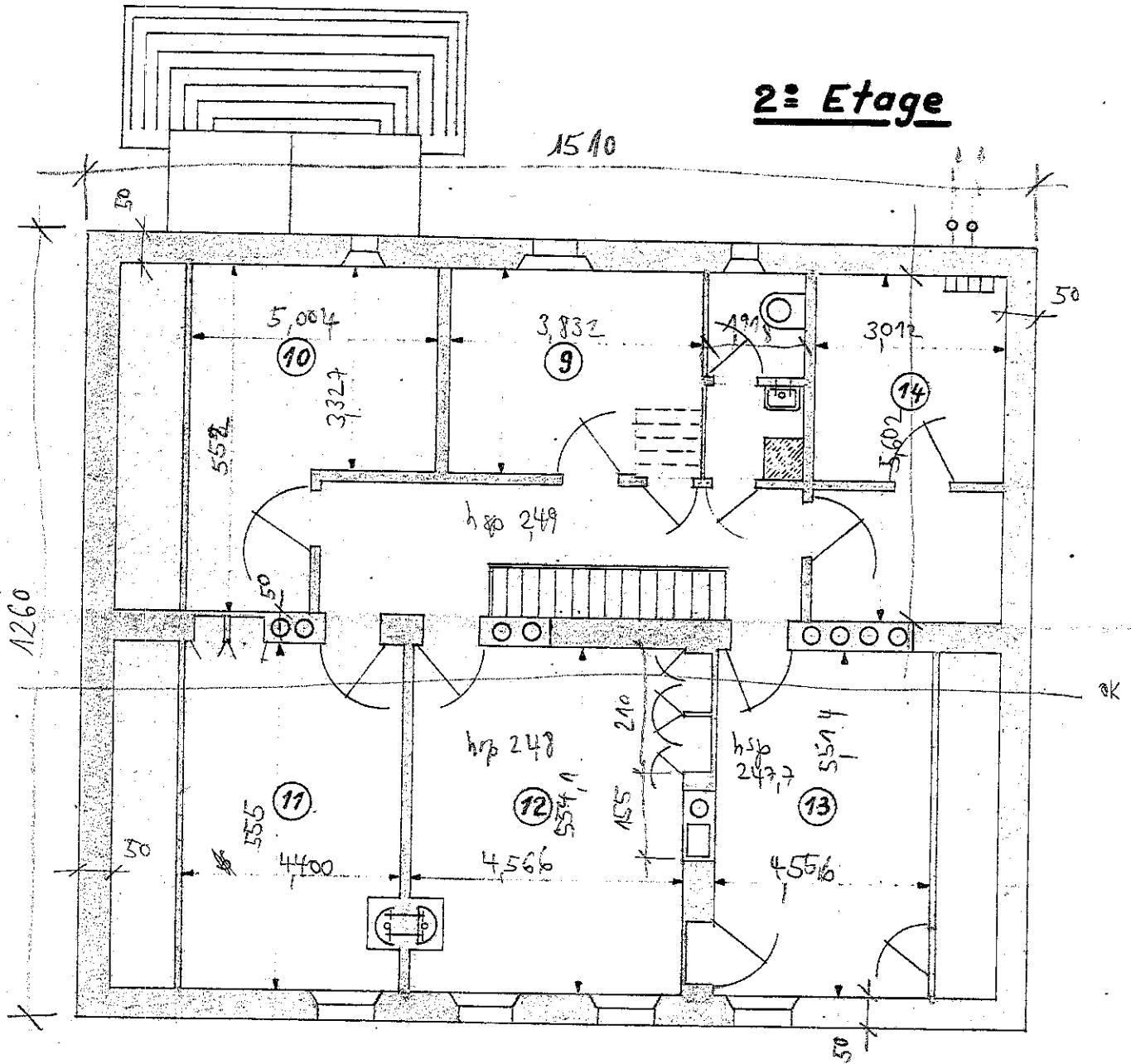
1: Etage

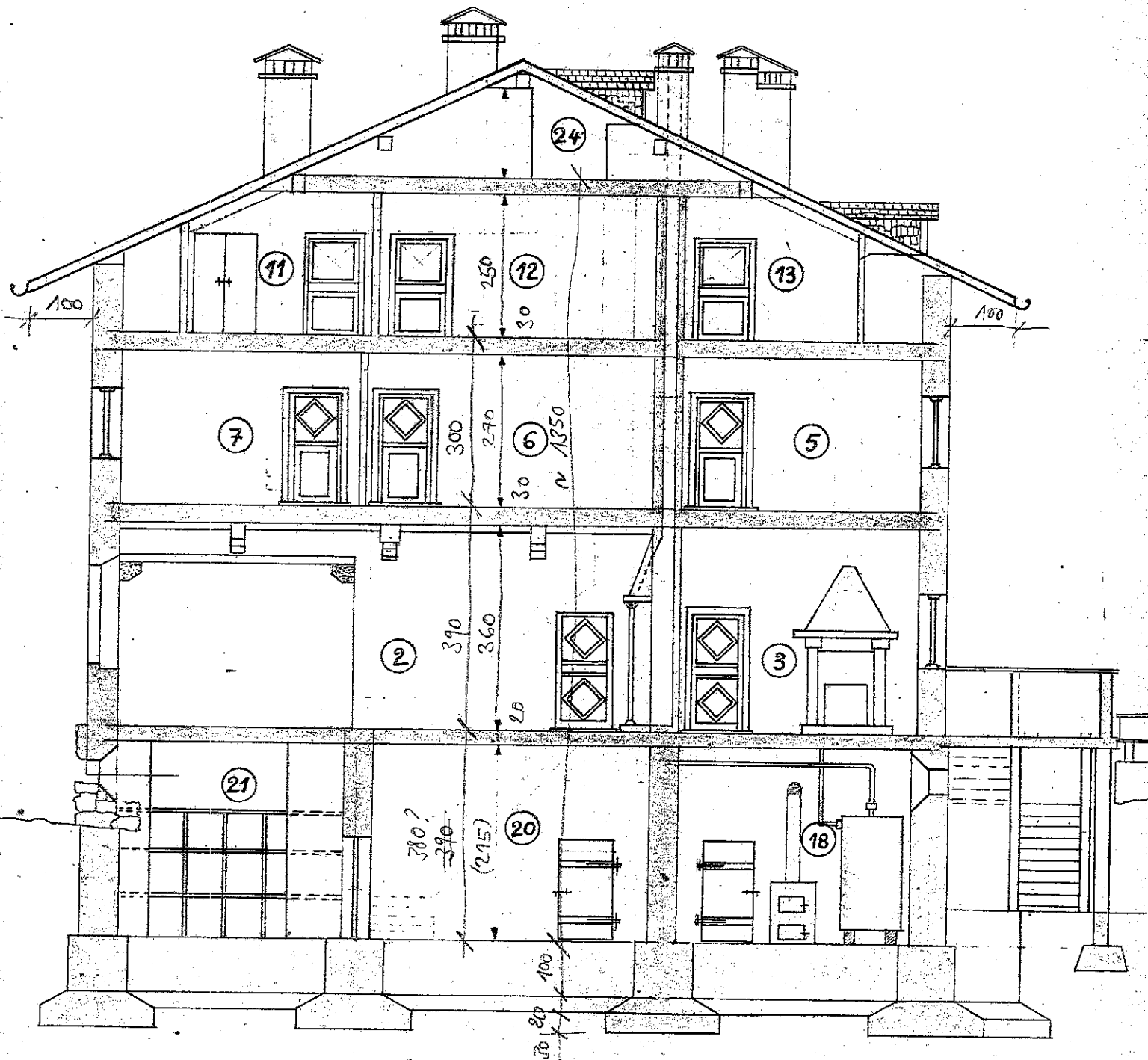
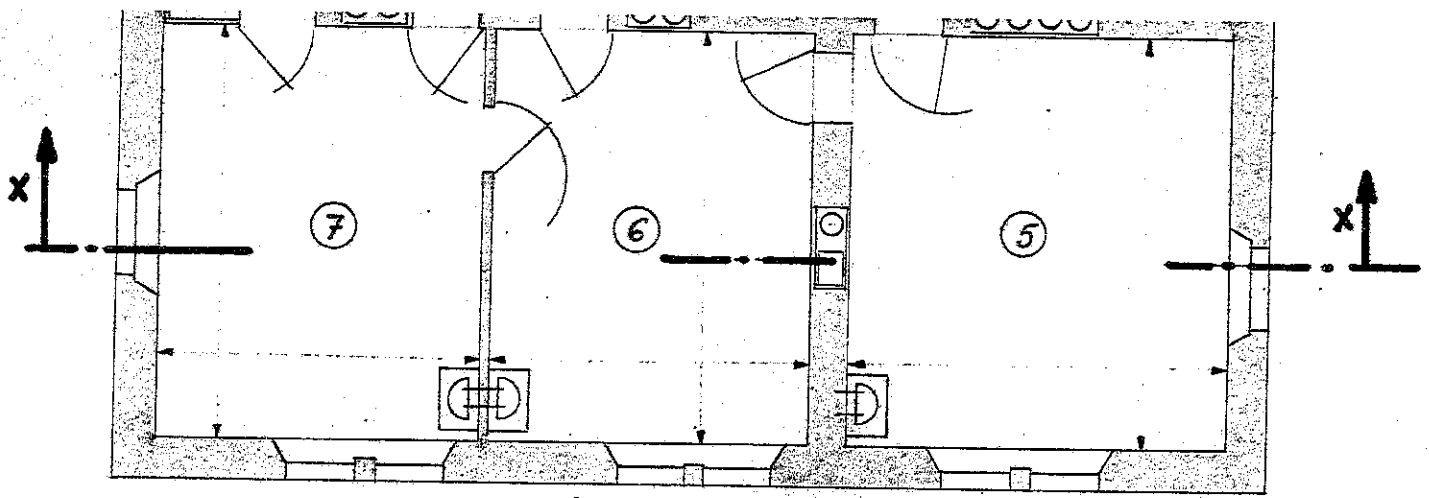




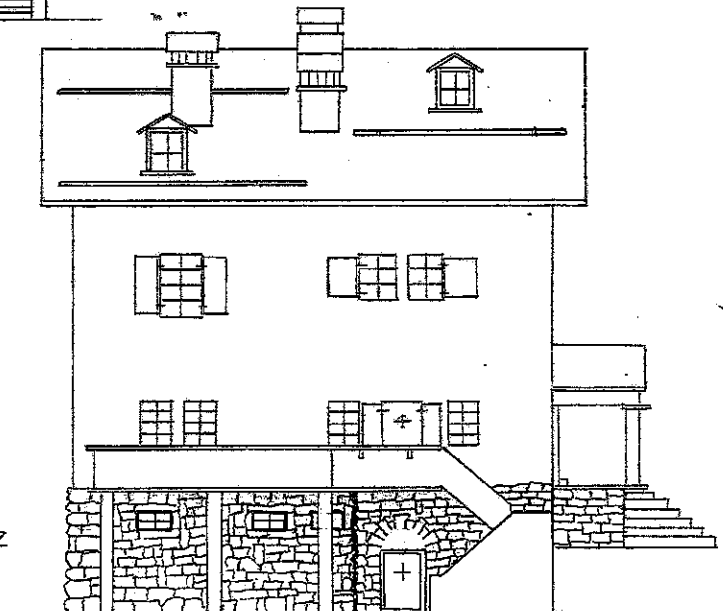
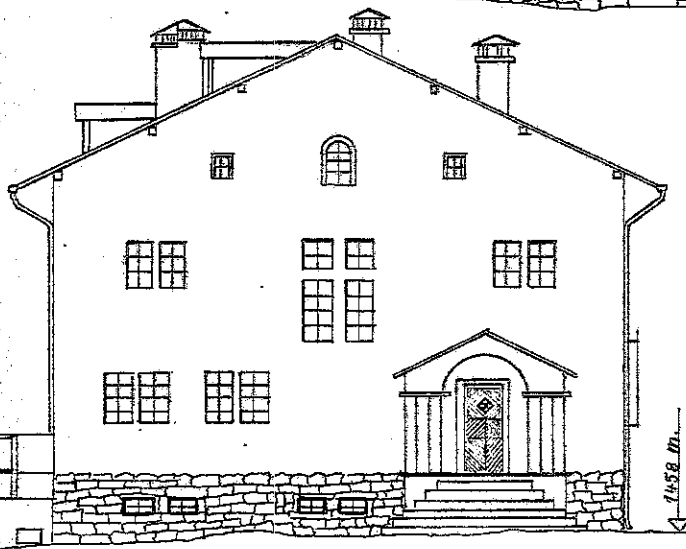
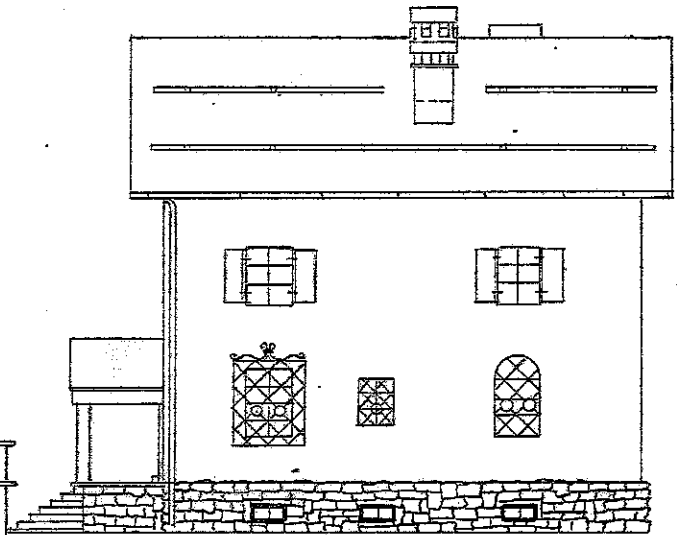
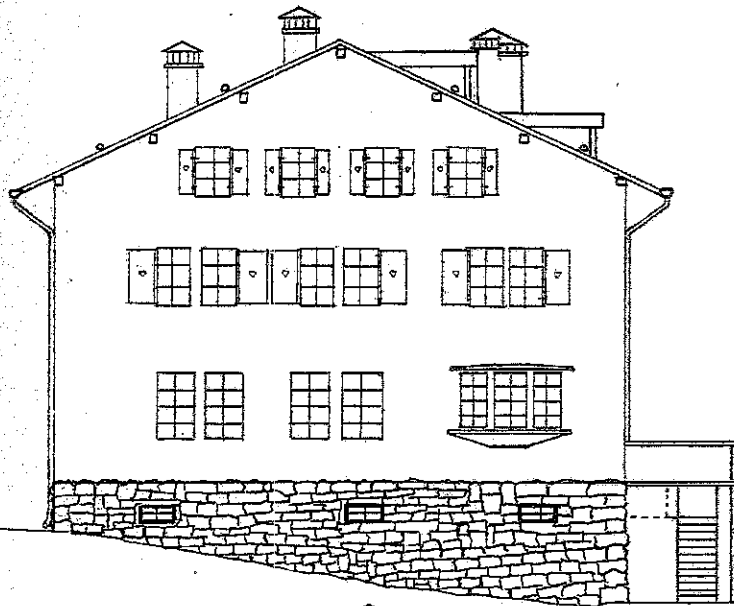
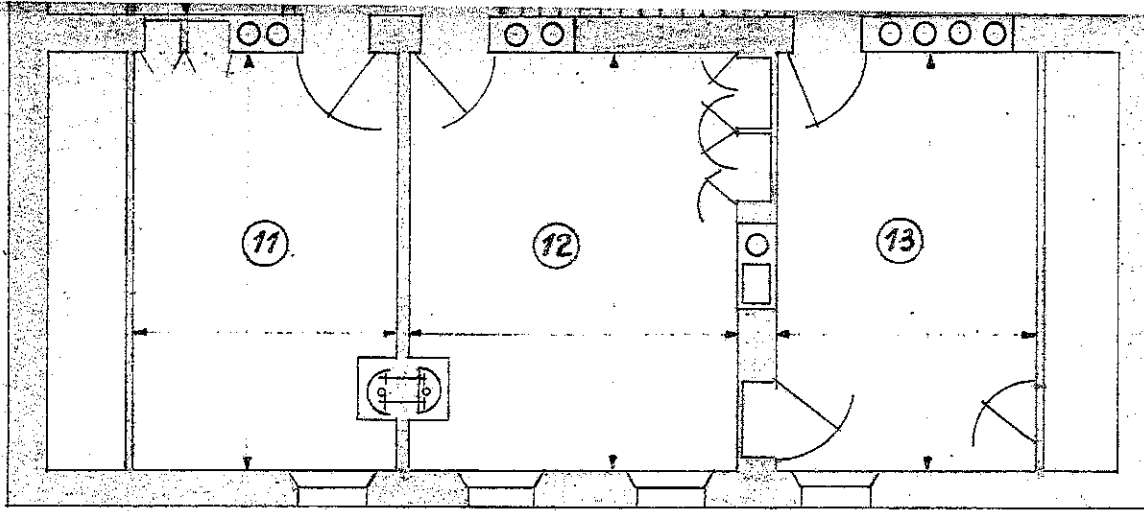
$$15,1 \times 12,6 \text{ m} = 190,26 \text{ m}^2 \times 13,8 \text{ (h moy)} = 2625 \text{ m}^3$$

**2<sup>e</sup> Etage**





**Coupe XX.**



**"Les Barmes.. 5<sup>e</sup> Jean**  
**Val d'Anniviers - Valais - Suisse**

Echelle  
 1:100  
 1:200

dessiné  
 vérifié  
 vu

L. Joyet Fév. 51