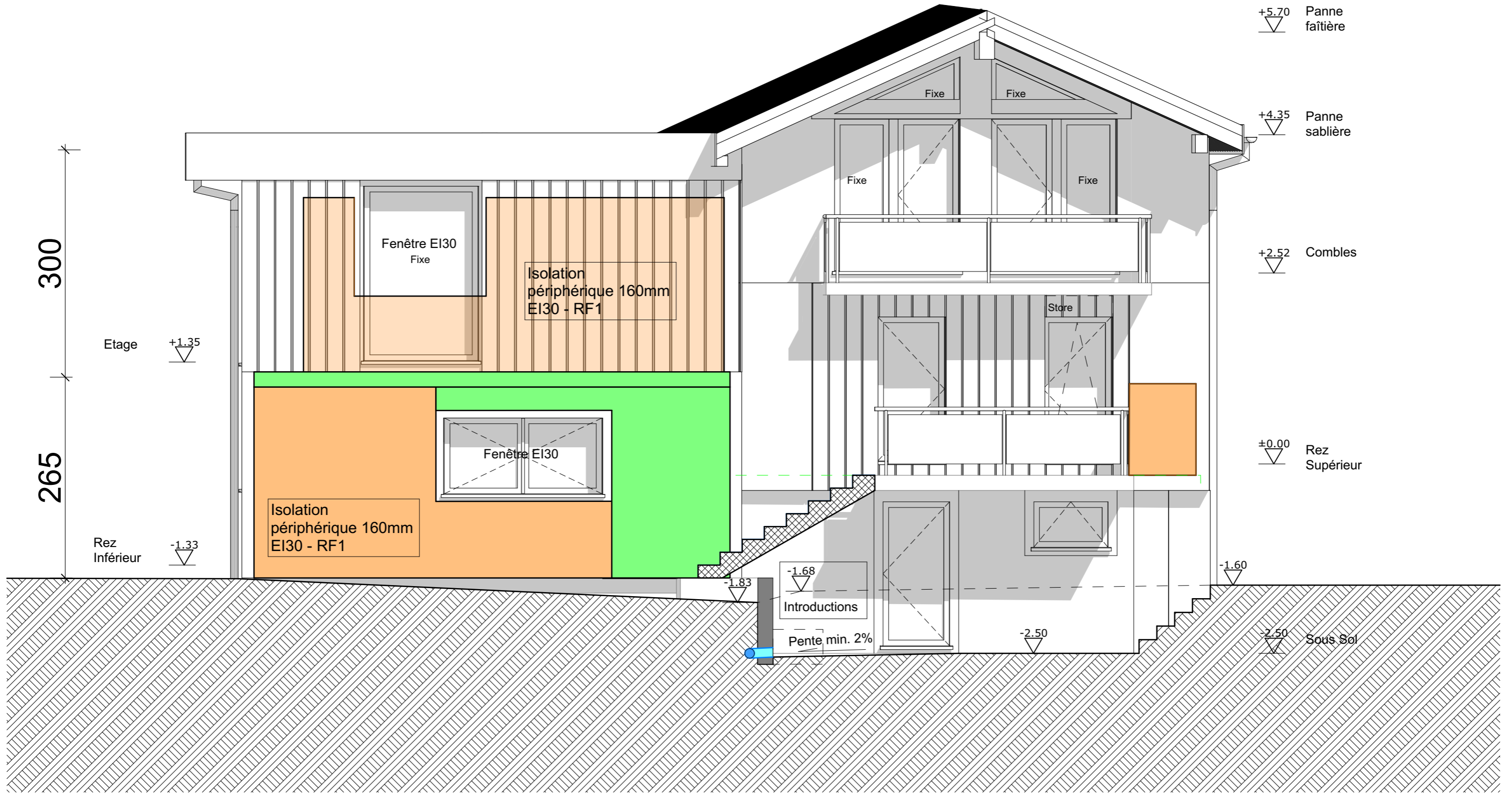


- Mur existant BC 18cm
- Mur existant béton 18cm
- Dalle existant béton



- Mur existant BC 18cm
- Mur existant béton 18cm
- Dalle existant béton



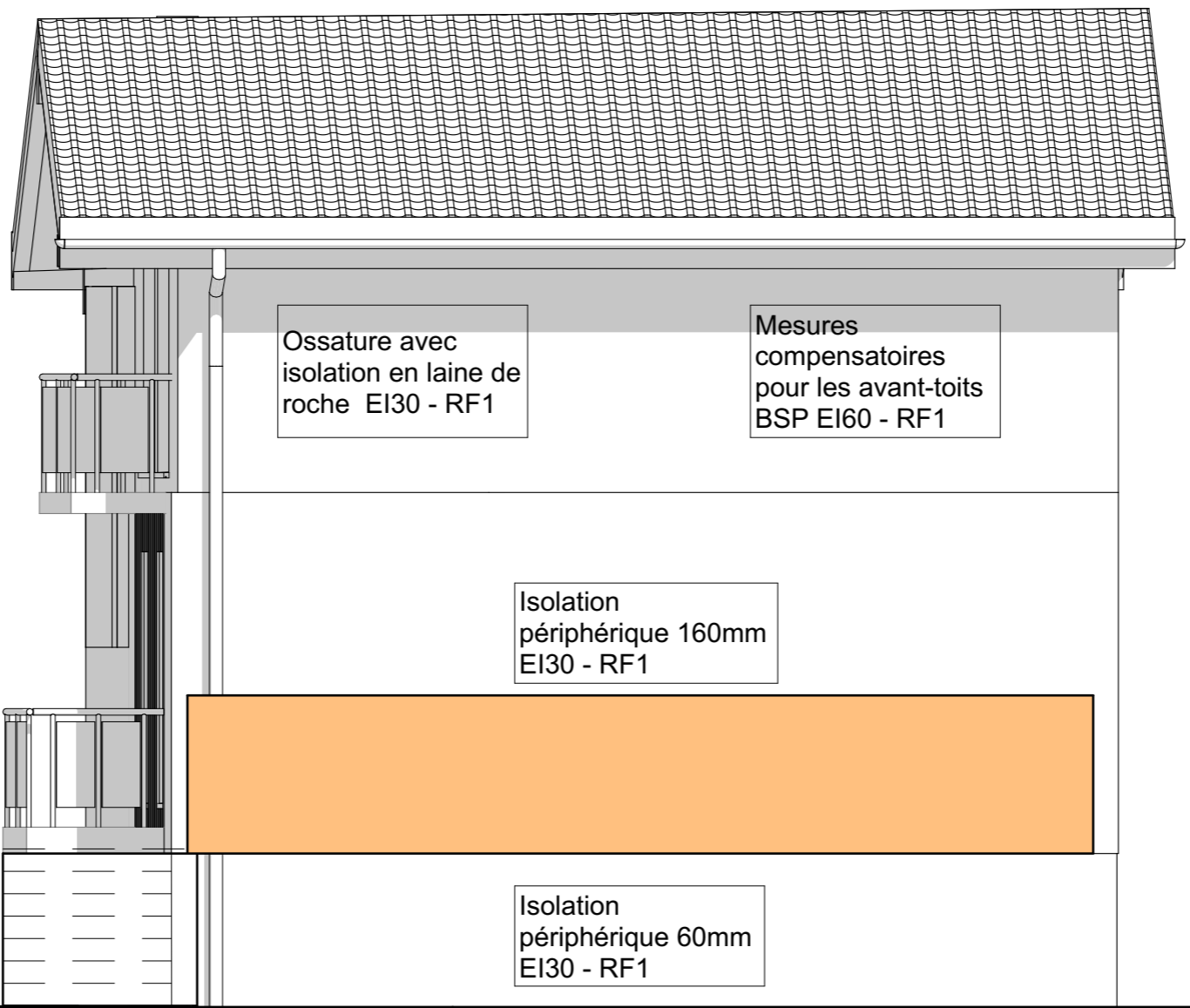
- Mur existant BC 18cm
- Mur existant béton 18cm
- Dalle existant béton

Panne  
faîtière +5.70

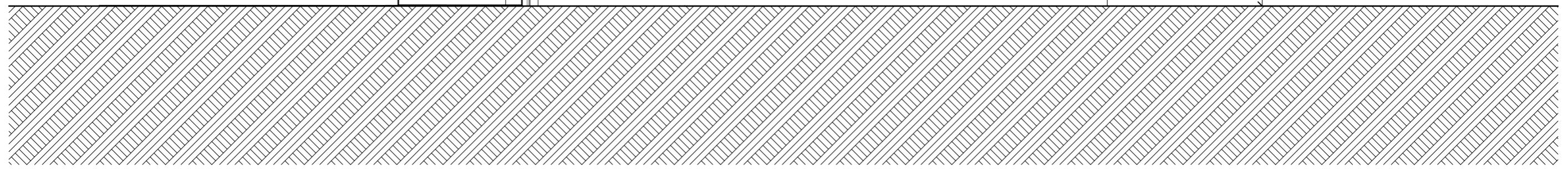
Panne  
sablère +4.35




Combles +2.52

Rez  
Supérieur ±0.00



720



-  Mur existant BC 18cm
-  Mur existant béton 18cm
-  Dalle existant béton

Panne  
faîtière +5.70

Panne  
sablère +4.35

Combles +2.52

Rez  
Supérieur ±0.00

Sous Sol -2.50

720

300

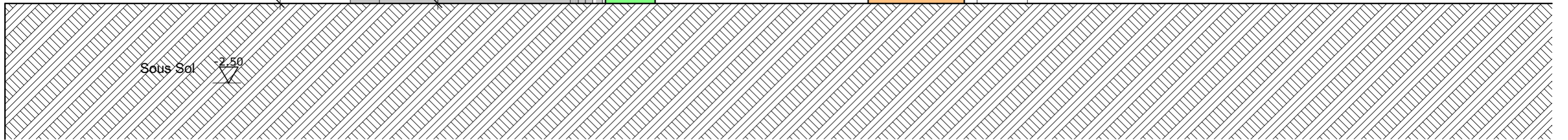
265

Store



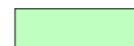
Fixe

+1.35 Etage

-1.33 Rez  
Inférieur





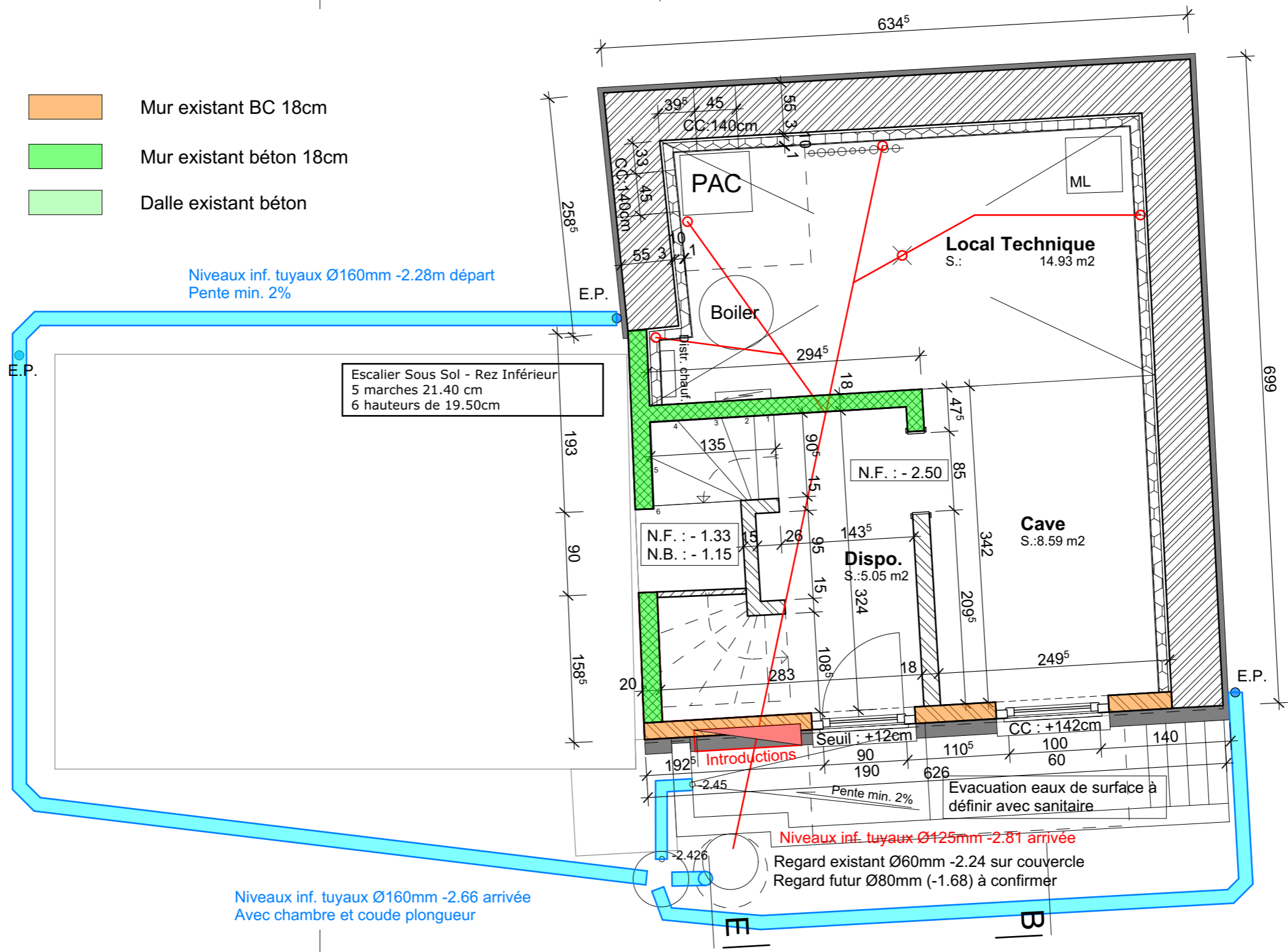
-  Mur existant BC 18cm
-  Mur existant béton 18cm
-  Dalle existant béton



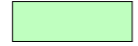
Niveaux inf. tuyaux Ø160mm -2.28m départ  
Pente min. 2%

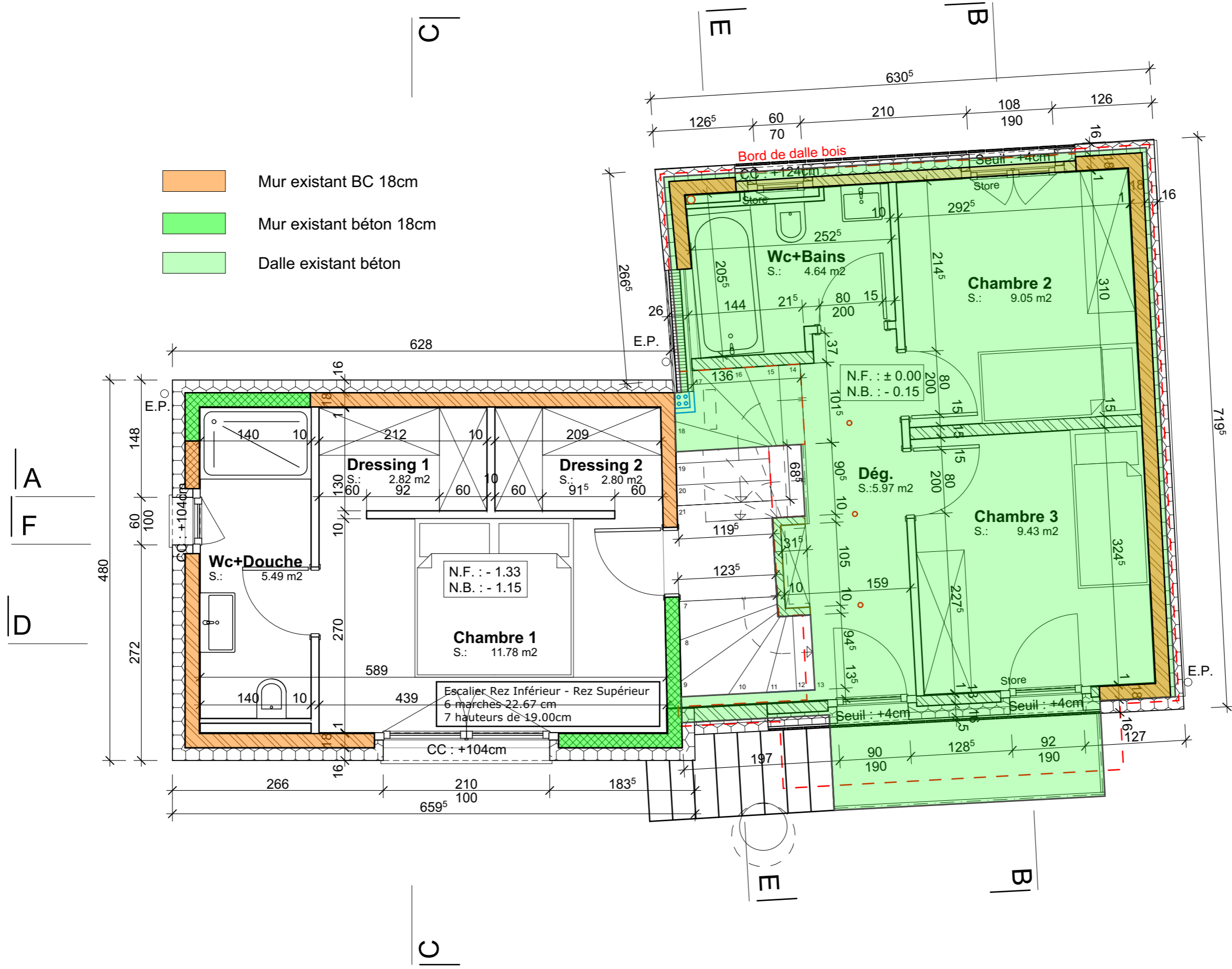
Escalier Sous Sol - Rez Inférieur  
5 marches 21.40 cm  
6 hauteurs de 19.50cm

Niveaux inf. tuyaux Ø125mm -2.81 arrivée  
Regard existant Ø60mm -2.24 sur couvercle  
Regard futur Ø80mm (-1.68) à confirmer

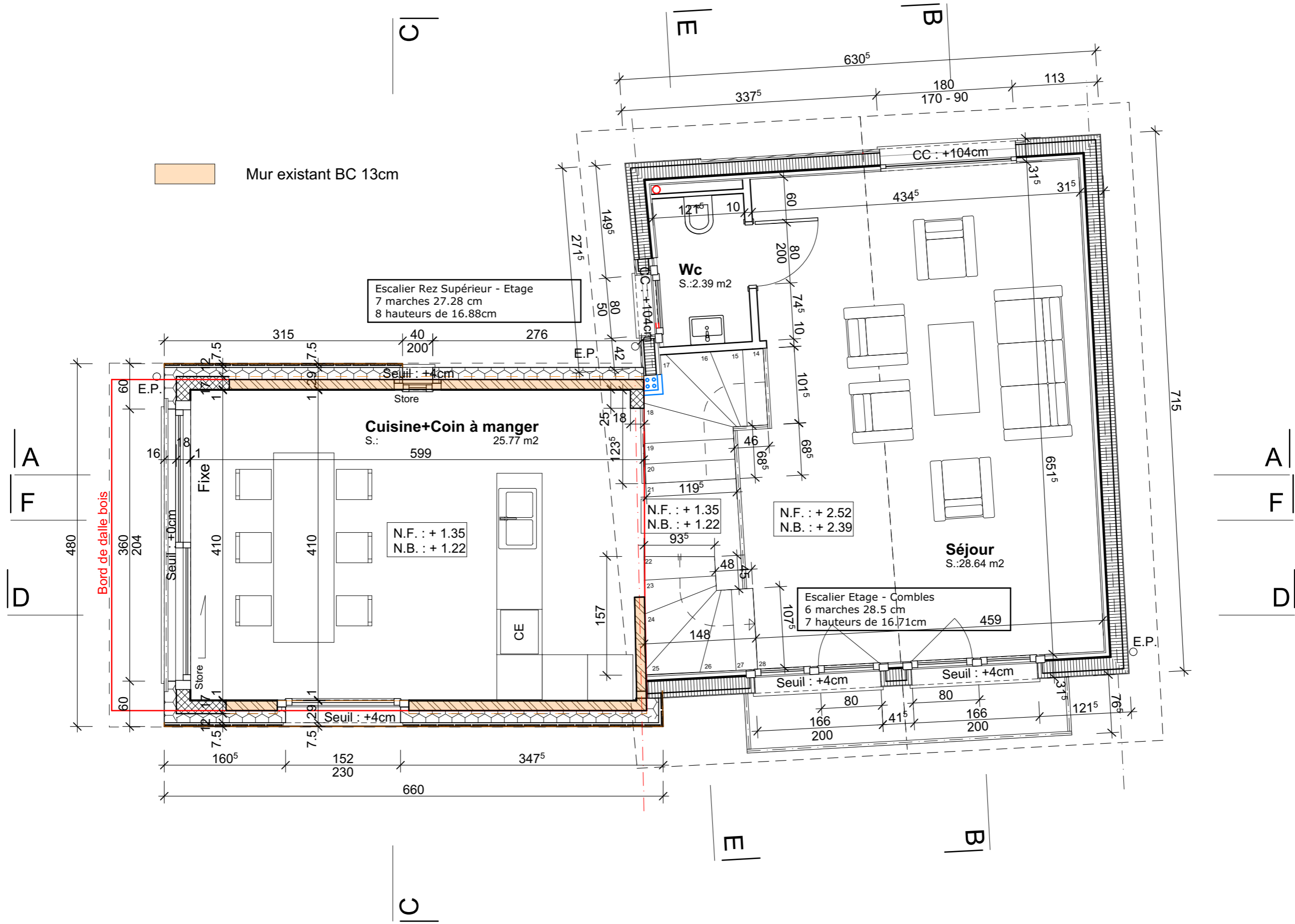
Niveaux inf. tuyaux Ø160mm -2.66 arrivée  
Avec chambre et coude plongeur



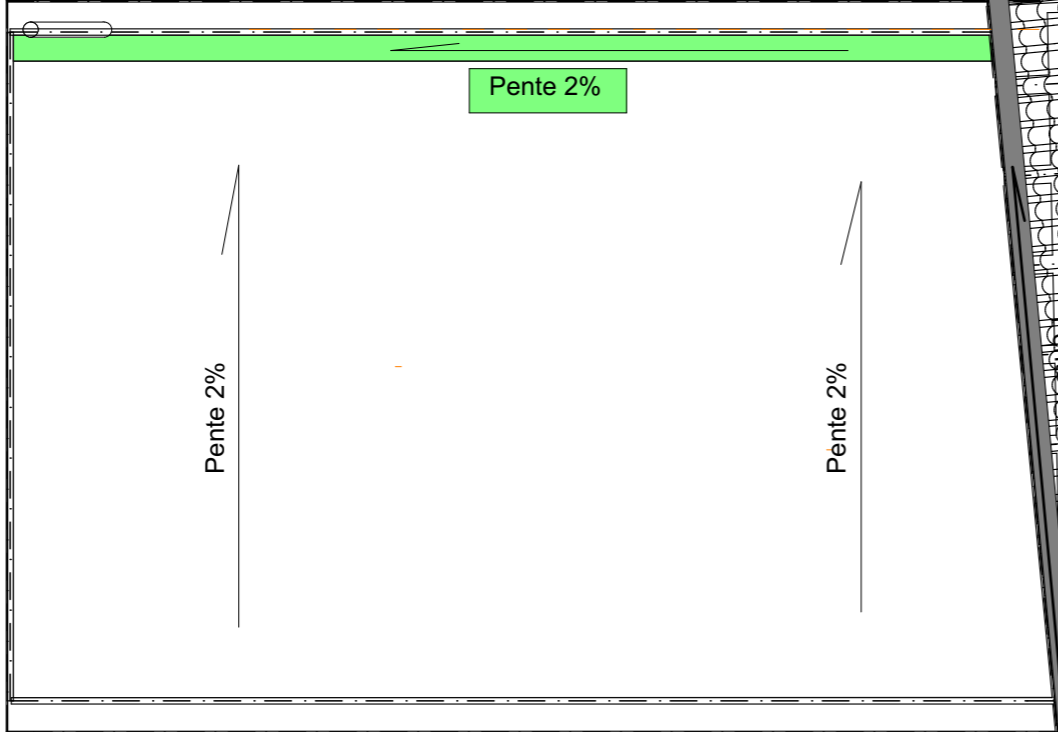
-  Mur existant BC 18cm
-  Mur existant béton 18cm
-  Dalle existant béton



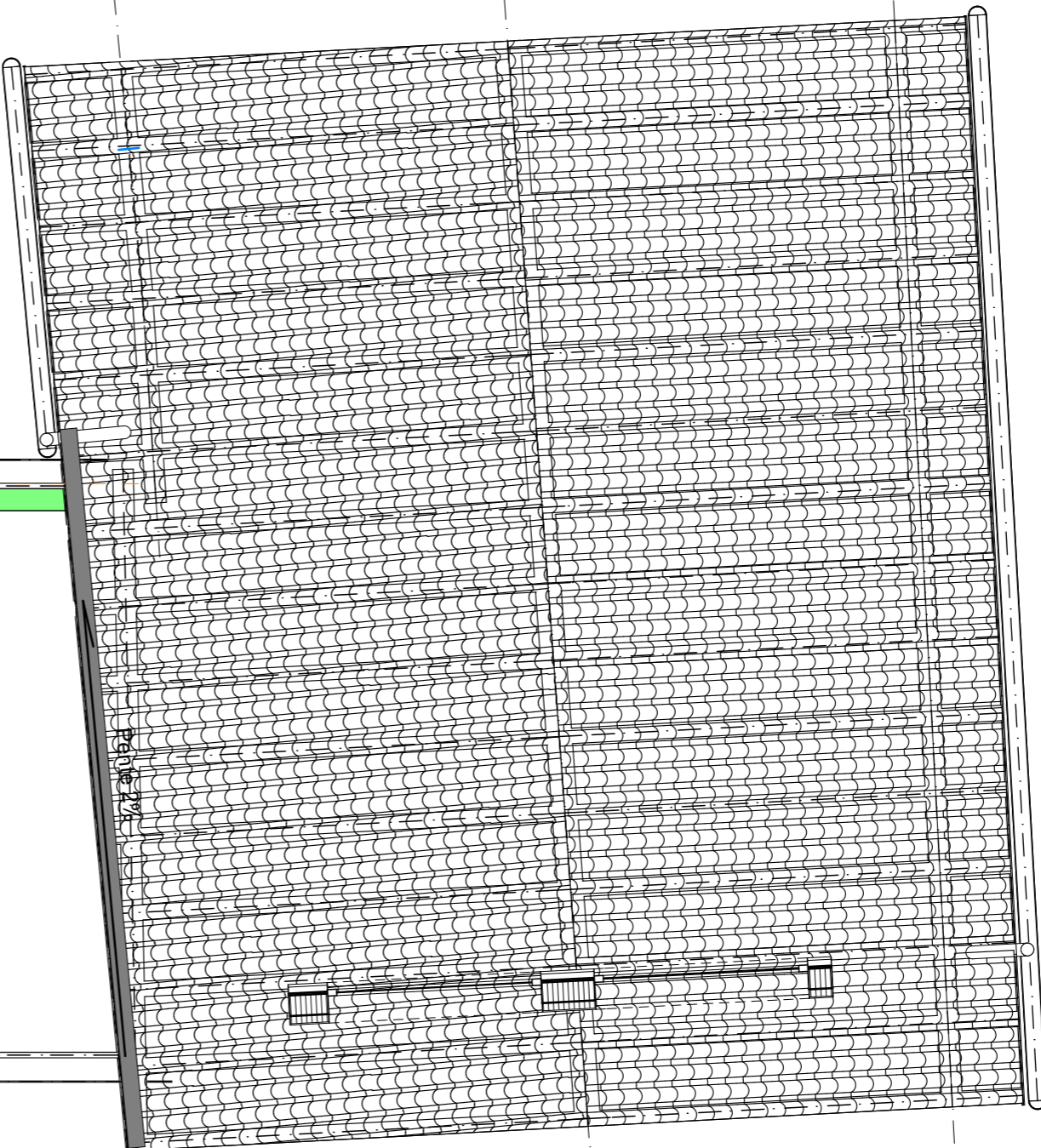




A  
F  
D



C



E

B

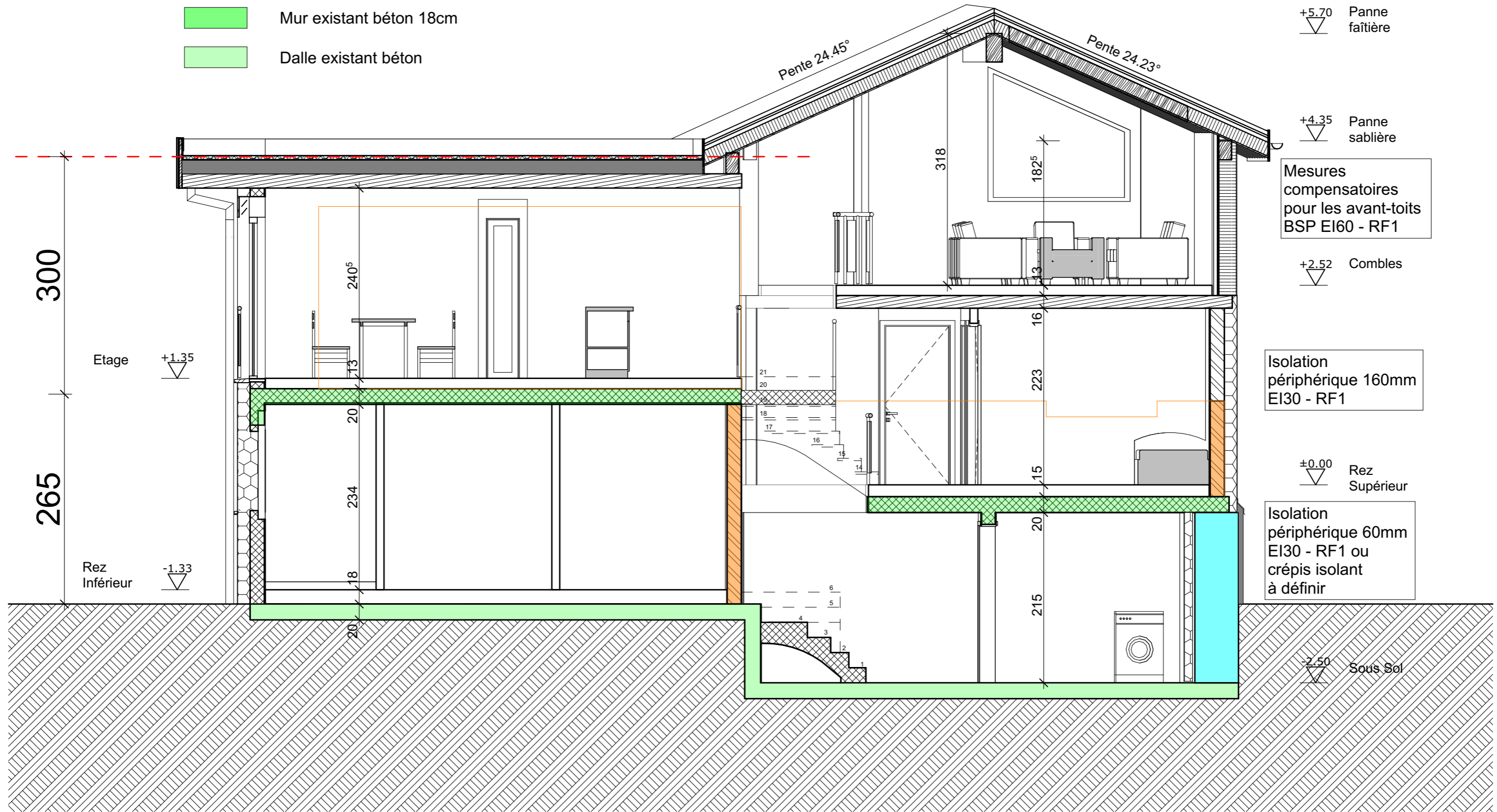
A  
F  
D

E

B

>

- Mur existant BC 18cm
- Mur existant béton 18cm
- Dalle existant béton



- Mur existant BC 18cm
- Mur existant béton 18cm
- Dalle existant béton

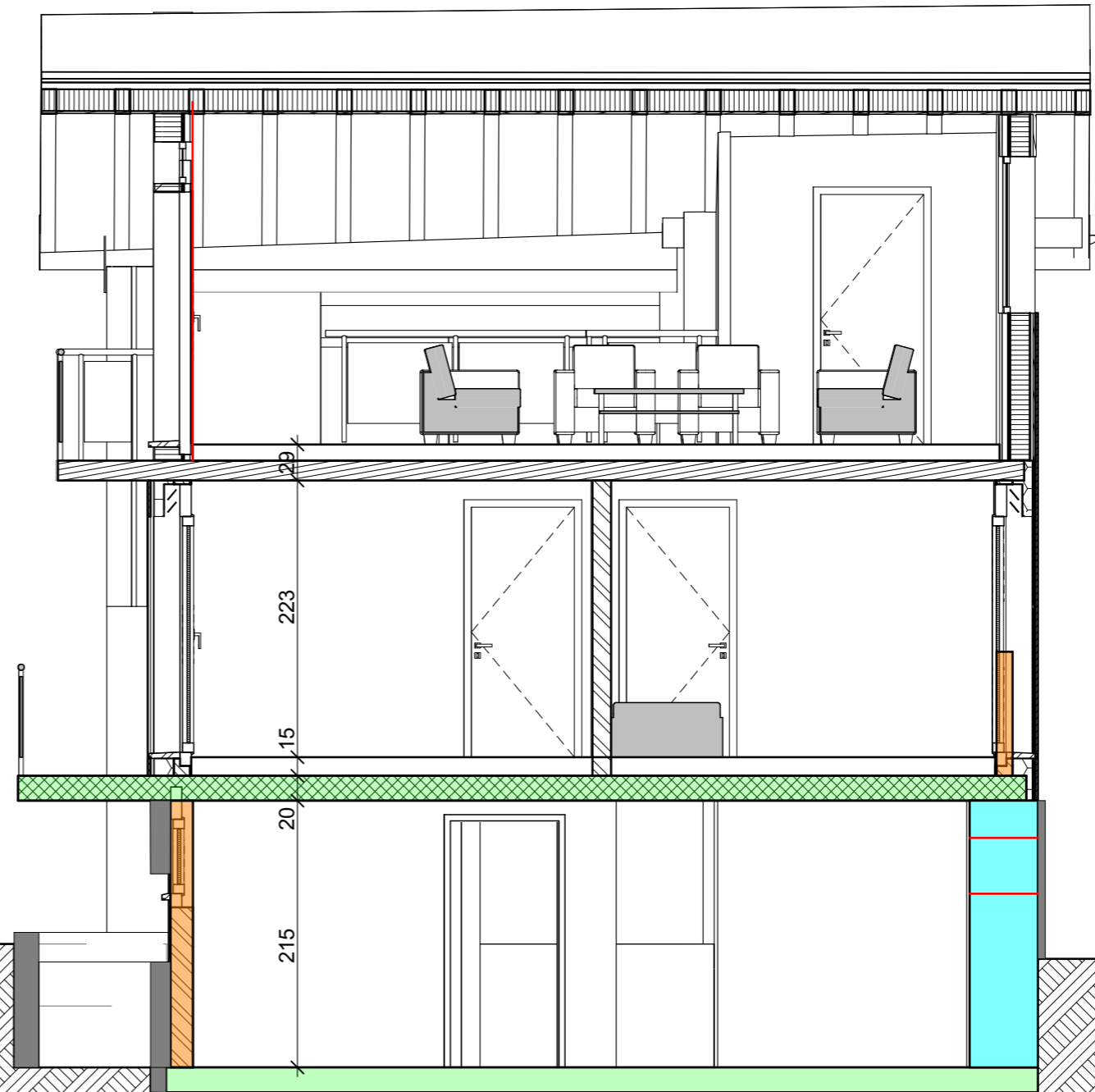
Panne  
faîtière  $\nabla$  +5.70

Panne  
sablère  $\nabla$  +4.35

Combles  $\nabla$  +2.52

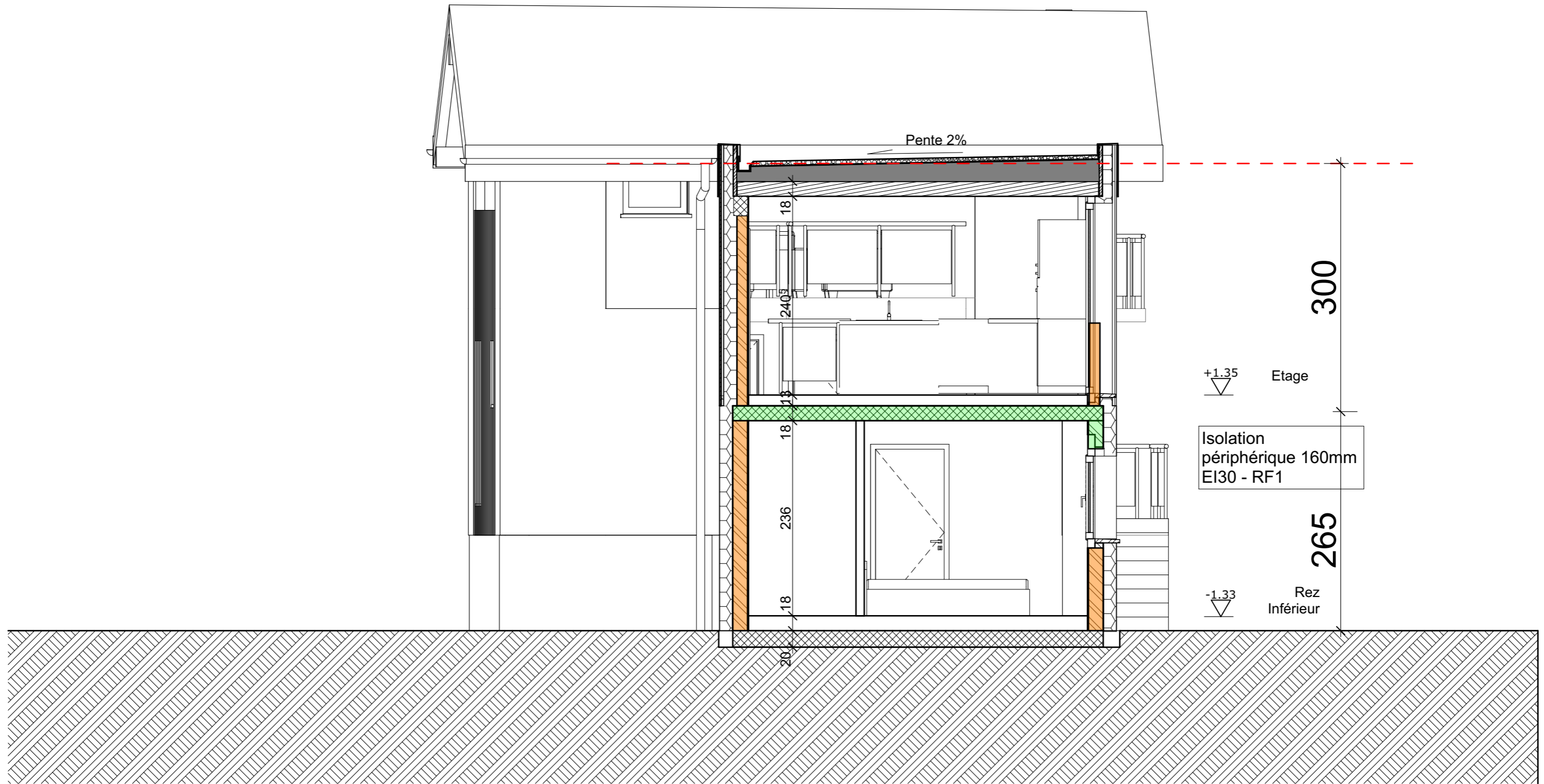
Rez  
Supérieur  $\nabla$  ±0.00

Sous Sol  $\nabla$  -2.50

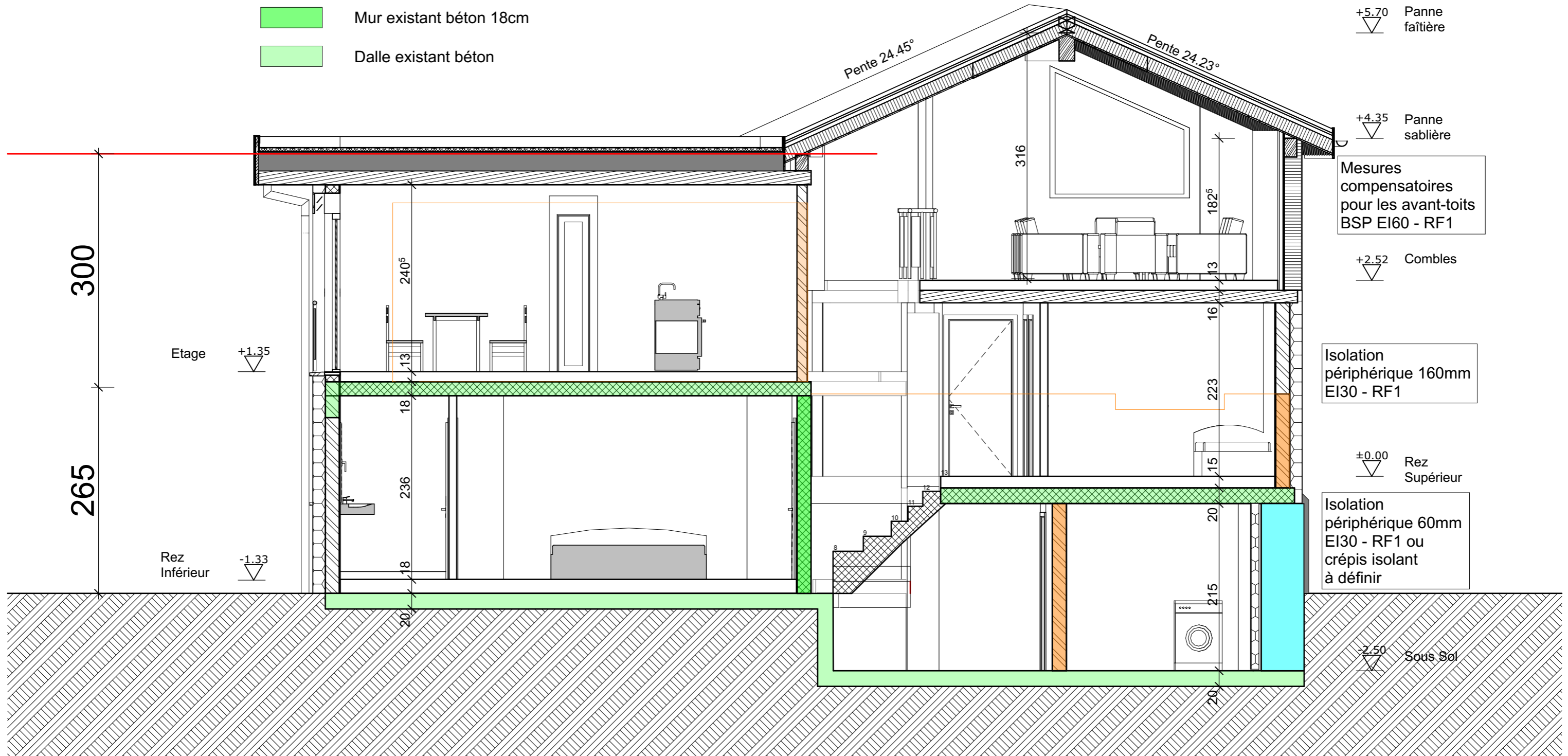


Isolation  
périphérique 60mm  
ou crépis isolant  
(à définir)

- Mur existant BC 18cm
- Mur existant béton 18cm
- Dalle existant béton



- Mur existant BC 18cm
- Mur existant béton 18cm
- Dalle existant béton



+5.70 Panne faîtière

+4.35 Panne sablière

Mesures compensatoires pour les avant-toits BSP EI60 - RF1

+2.52 Combles

Isolation périphérique 160mm EI30 - RF1

±0.00 Rez Supérieur

Isolation périphérique 60mm EI30 - RF1 ou crépis isolant à définir

-1.50 Sous Sol

Pente 24.45°

Pente 24.23°

Etage +1.35

Rez Inférieur -1.33

300

265

240<sup>s</sup>

13

18

236

18

20

316

182<sup>s</sup>

13

16

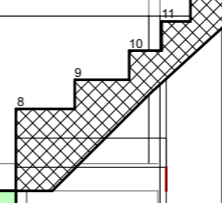
223

15

20



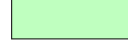
215

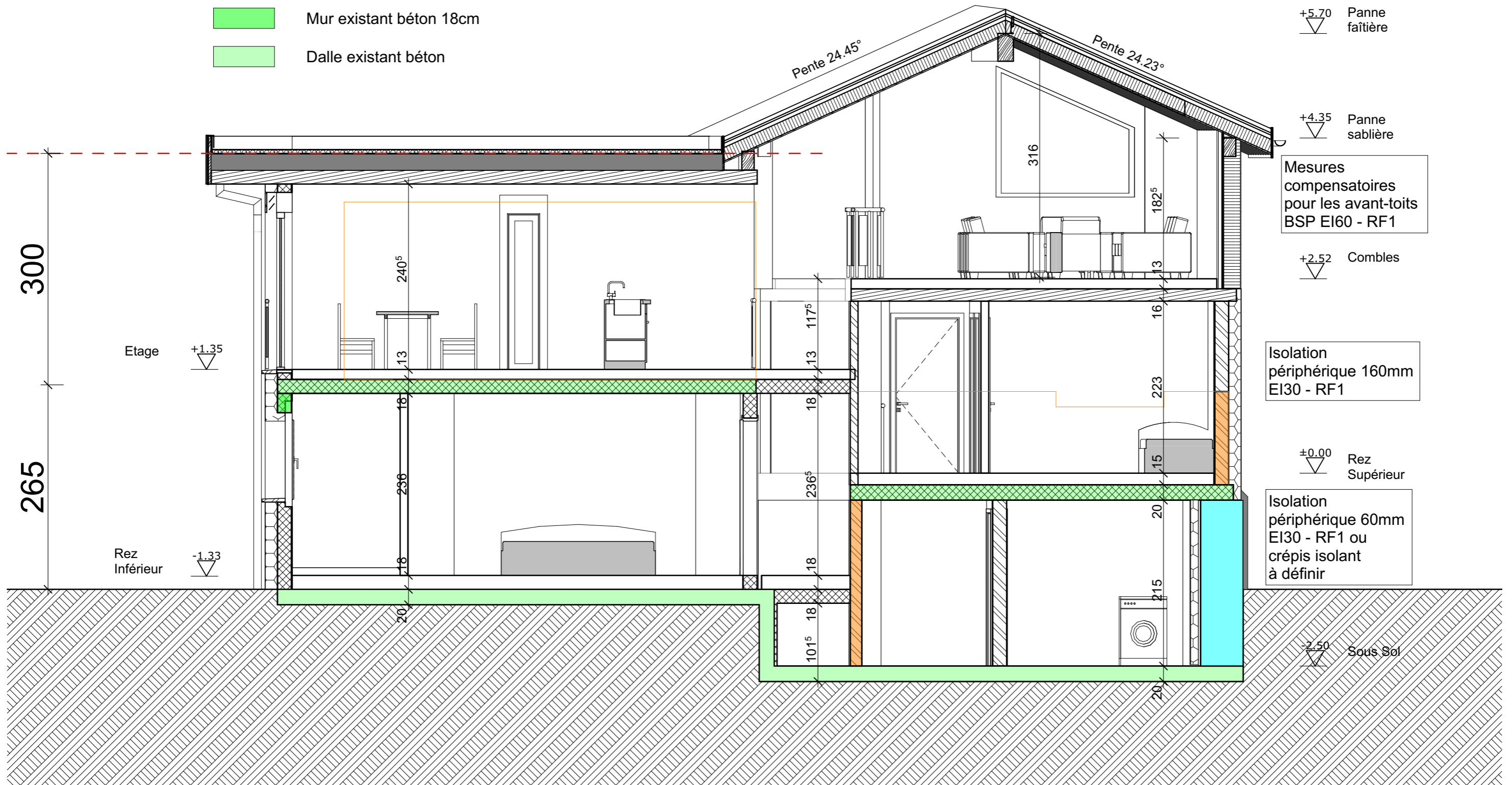
20







-  Mur existant BC 18cm
-  Mur existant béton 18cm
-  Dalle existant béton



+5.70 Panne faîtière

+4.35 Panne sablière

Mesures compensatoires pour les avant-toits BSP EI60 - RF1

+2.52 Combles

Isolation périphérique 160mm EI30 - RF1

±0.00 Rez Supérieur

Isolation périphérique 60mm EI30 - RF1 ou crépis isolant à définir

-2.50 Sous Sol

Etage +1.35

Rez Inférieur -1.33

Pente 24.45°

Pente 24.23°

316

182<sup>s</sup>

240<sup>s</sup>

236<sup>s</sup>

117<sup>s</sup>

236<sup>s</sup>

101<sup>s</sup>

13

16

223

15

20

15

20

20

18

18

20